



**REGIONAL SPECIALISED METEOROLOGICAL CENTRE-TROPICAL CYCLONES, NEW DELHI
TROPICAL WEATHER OUTLOOK**

DEMS-RSMC TROPICAL CYCLONES NEW DELHI DATED 14.09.2023

TROPICAL WEATHER OUTLOOK FOR NORTH INDIAN OCEAN (THE BAY OF BENGAL AND THE ARABIAN SEA) VALID FOR NEXT 168 HOURS ISSUED AT 0600 UTC OF 14.09.2023 BASED ON 0300 UTC OF 14.09.2023.

BAY OF BENGAL:

YESTERDAY'S LOW PRESSURE AREA OVER NORTHWEST & ADJOINING WESTCENTRAL BAY OF BENGAL BECAME WELL MARKED LOW PRESSURE AREA OVER NORTHWEST BAY OF BENGAL OFF NORTH ODISHA WEST BENGAL COASTS AT 0000 UTC OF TODAY, THE 14TH SEPTEMBER 2023. IT LAY OVER NORTHWEST BAY OF BENGAL & ADJOINING NORTH ODISHA WEST BENGAL COASTS AT 0300 UTC. IT IS LIKELY TO MOVE ACROSS ODISHA AND CHHATTISGARH DURING NEXT 2 DAYS.

SCATTERED TO BROKEN LOW AND MEDIUM CLOUDS WITH EMBEDDED INTENSE TO VERY INTENSE CONVECTION LAY OVER BAY OF BENGAL AND NORTH ANDAMAN SEA. SCATTERED LOW AND MEDIUM CLOUDS WITH EMBEDDED MODERATE TO INTENSE CONVECTION LAY OVER GULF OF MARTABAN AND SOUTH ANDAMAN SEA.

PROBABILITY OF CYCLOGENESIS (FORMATION OF DEPRESSION) DURING NEXT 168 HRS:

24 HOURS	24-48 HOURS	48-72 HOURS	72-96 HOURS	96-120 HOURS	120-144 HOURS	144-168 HOURS
NIL	NIL	NIL	NIL	NIL	NIL	NIL

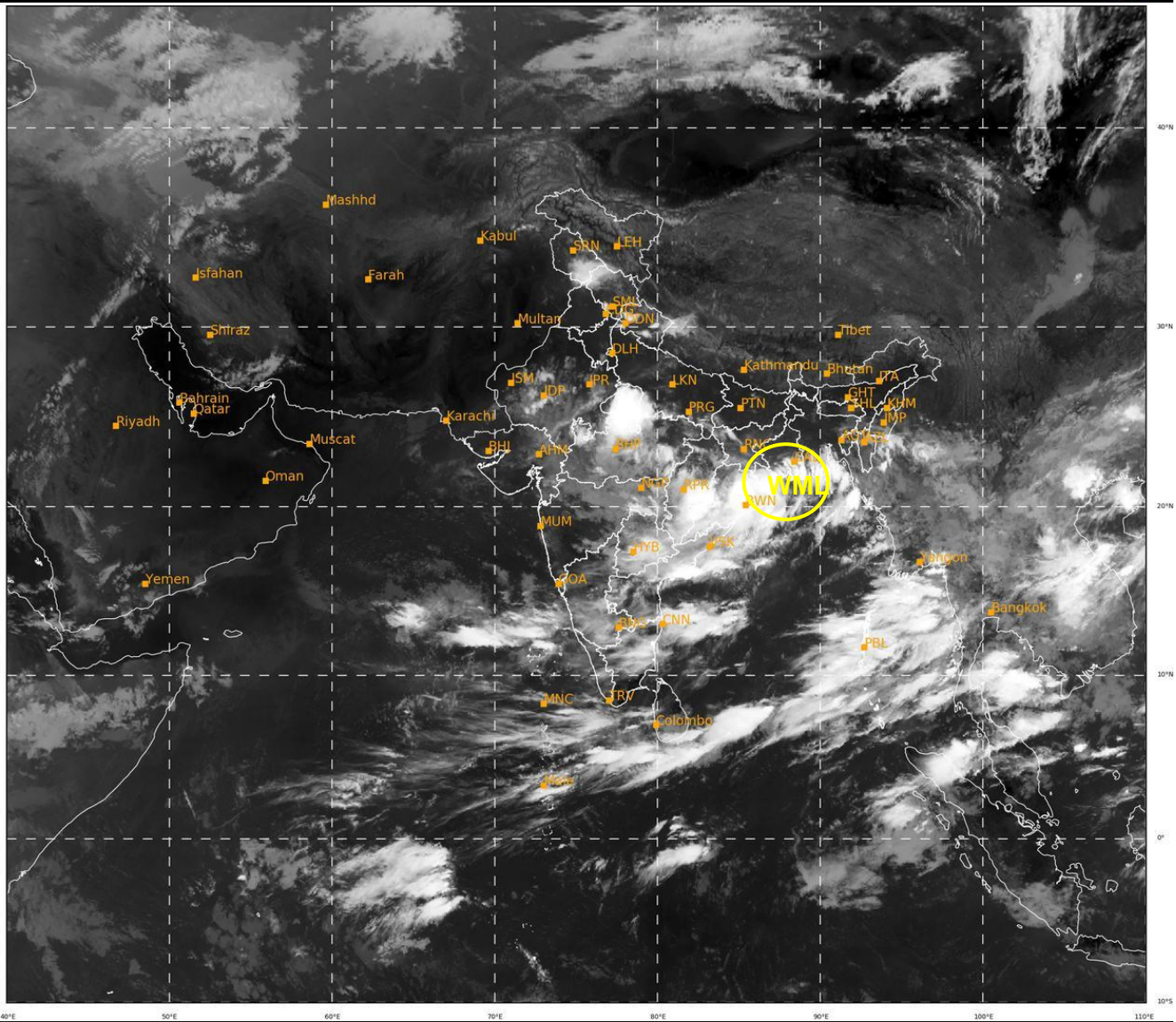
ARABIAN SEA:

SCATTERED LOW AND MEDIUM CLOUDS WITH EMBEDDED MODERATE TO INTENSE CONVECTION LAY OVER EASTCENTRAL & SOUTHEAST ARABIAN SEA, COMORIN AREA LAKSHADWEEP ISLANDS AREA.

PROBABILITY OF CYCLOGENESIS (FORMATION OF DEPRESSION) DURING NEXT 168 HRS:

24 HOURS	24-48 HOURS	48-72 HOURS	72-96 HOURS	96-120 HOURS	120-144 HOURS	144-168 HOURS
NIL	NIL	NIL	NIL	NIL	NIL	NIL

Remarks: NIL



446

923

IMD, DELHI

WML: WELL MARKED LOW PRESSURE AREA

Cloud distribution: (a) Isolated: <25%, Scattered:25-50%, Broken: 51-75%, Solid:>75%, Convection Intensity: (a) Weak: Cloud Top Temperature (CTT) >-25°C, (b) Moderate: CTT: - 25°C to -40°C, (c) Intense: CTT: - 41°C to -70°C and (d) Very Intense: : Less than -70°C
PROBABILITY OF CYCLOGENESIS (FORMATION OF DEPRESSION):NIL: 0%, LOW: 1-33%, , MODERATE: 34-66% AND HIGH: 67-100%
This is a guidance Bulletin for WMO/ESCAP Panel Member countries. Visit respective National websites for Country specific Bulletins